



St Mary Magdalene's School, Elizabeth Grove

2025 PROSPECTUS

Shaping our future together





Acknowledgment of Country

**Nudloo tumpuntea Kurna
Mirenya yarta
Mathanya Woma tartanyakoo**

We acknowledge the Kurna people are the land owners and custodians of the Adelaide Plains. We recognise Elders past and present. We are committed to Reconciliation.

Nachalia
Thank you

Affordable Catholic education for all

As of 2020, St Mary Magdalene's School does not charge Tuition fees. Our fee structure is part of our commitment to ensure family income does not restrict access to high quality Catholic education.

If you have any questions contact our Front Office.

Principal's Welcome



St Mary Magdalene's School offers a safe and happy learning environment, focusing on high quality teaching and learning where all children can succeed and thrive.

Welcome to St Mary Magdalene's School, a Catholic school in the Mercy tradition delivering excellence in education to the Elizabeth area.

We are a welcoming and inclusive community of learners. All families and faiths are welcome in our community.

About Us

St Mary Magdalene's School is part of the Elizabeth Catholic Parish. In 1957, the Adelaide Archdiocese invited the Sisters of Mercy to establish a school in Elizabeth.

Our education model engages the whole person and is founded on the Mercy Values of compassion, courage, hospitality, justice, respect and service. These values are embedded into our curriculum to educate students with an understanding of the spiritual, intellectual, physical and social aspects of their lives.

We invite students to make connections between their daily lives, the lives of others, learning, the natural environment and God. Through religious education, daily prayer, liturgies, sacraments, social justice and outreach programs, children are invited to build a deep and personal relationship with God.

Our focus is on all children being able to succeed and thrive. We encourage a no-fail environment where learning, growth and resilience are encouraged in students to create life-long learners.

Our school acknowledges and recognises the traditional owners of the land, the Kurna people, and we encourage our Aboriginal and Torres Strait Islander students to develop their cultural connections. We also encourage this connection and understanding within the broader school community to help foster and develop reconciliation with Australia's first people.

We offer Reception transition days, and two Reception intakes per year. I encourage you to view our website and contact the school for further information and enrolment details. I host school tours regularly throughout the term and registrations can be made via our Front Office or website.

I invite you to discover more about our school and learn how our contemporary curriculum and focus on the education of the whole person in the unique Mercy tradition provides each child with every opportunity to achieve success.

Regards,
Belinda Bennett



Our Vision, Mission, and Values

Our Vision

At St Mary Magdalene's School we create an innovative and contemporary educational environment which resonates with students and their families and leads to a love of lifelong learning.

We seek to nurture people to take their place in the world as happy, balanced, and productive citizens by striving to build the capacity of our families. In partnership with our Parish, we teach the Catholic faith and provide an invitation to encounter the love of God.

Our Mission

Inspired by our Catholic Faith and in partnership with families and our wider community, St Mary Magdalene's School creates an environment that invites engagement in life to the full in all its personal, religious, civic, ecological and cultural richness.

Our Values

As a Mercy school, the Mercy Education Values of compassion, justice, respect, hospitality, service and courage are embedded into our curriculum.

The Mercy Values educate students with an understanding of the spiritual, intellectual, physical and social aspects of their lives.

Mercy Education Values



Compassion

We encourage and practice compassion within our school and community by putting our Faith In Action with fundraising activities, promoting inclusion and kindness throughout our school.



Courage

To act with courage takes strength and resilience. Our school is a safe space where children can learn to be courageous through attempting difficult tasks, changing behaviour, taking action against injustice, or tackling personal difficulty.



Hospitality

Being kind, generous and welcoming to our friends, family and those we know is easy. We remove barriers that stop us from extending hospitality to ensure we are an inclusive and kind community.



Justice

Through our school policies and pastoral care, we create fairness and justice in our relationships with students, staff and families and in our daily interactions with others through words, actions and attitude.



Respect

We show respect and recognise we must earn our communities respect through our words, actions and attitudes. Students are encouraged to celebrate the goodness of others at home, school and in the general community.



Service

Service is using our talents and gifts to help others, thereby enriching our classrooms, our school and our broader community.

Enrolment Process

Families seeking Catholic co-education for their children are invited to apply for enrolment.

Acceptance into St Mary Magdalene's School is consistent with the guidelines of the South Australian Commission for Catholic School Enrolment Process. To apply for enrolment at our school we ask that you may follow these steps:

1 Book a Tour

A tour is a great way to see if our school is the right fit for you and your family. We encourage you to book a tour at the beginning of the enrolment process. You can book a tour online or by contacting our Front Office on **8287 7900**.

2 Complete and submit an Application for Enrolment Form.

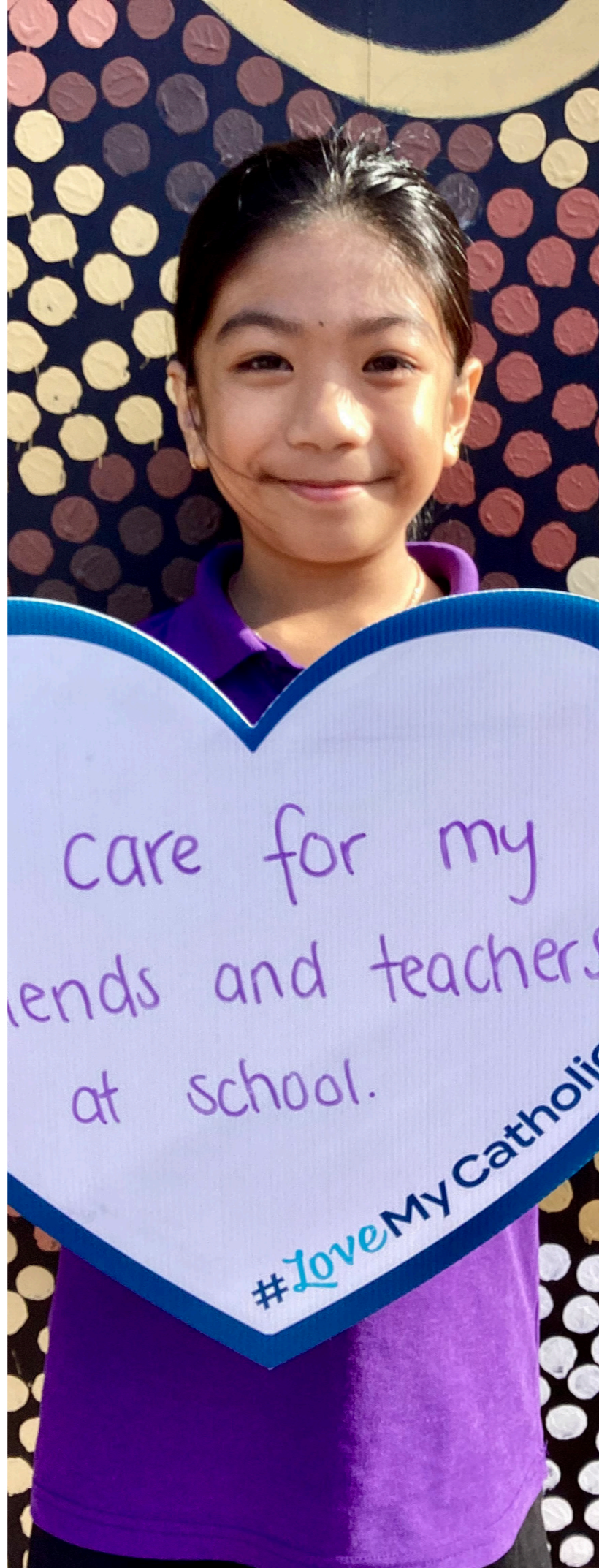
Download the Application for Enrolment Form from our website at smm.catholic.edu.au or request an Enrolment Pack from our school Front Office at 82 Fairfield Road, Elizabeth Grove, or contact us on **8287 7900** | info@smm.catholic.edu.au

3 Attend an Enrolment Discussion

Our school will contact you to acknowledge your application and arrange an Enrolment Discussion with our Principal or Head of School for you and your child. During this discussion you will have the opportunity to ask any questions about our school, and we can find out more about your child's learning needs and requirements.

4 Offer of Enrolment

If your application is successful, you will receive an Offer of Enrolment which is a formal offer of a place at St Mary Magdalene's School. The enrolling parents/guardians will be required to sign and returned the Acceptance of Offer to the school before acceptance is finalised.



Enrolment Information

Starting school is a significant and exciting time for children and you, their family. We feel privileged to be entrusted with the academic, social, physical, religious and emotional education of your child and look forward to working in partnership with you in supporting your child through their primary school journey, encouraging them to be the best version of themselves.

The main entry point for student enrolments at St Mary Magdalene's School is Reception, however, we often accept families where children are seeking enrolment in other year levels.

When is my child eligible to begin school?

In South Australia, most children begin school in the year that they turn 5 or 6 years old. When your child is eligible to begin school will depend on their birth date.

My child turns 5:	My child can begin Reception:
Before 1 May, 2025	Term 1, 2025
Between 1 May and 31 October, 2025	Term 3, 2025 (mid-year intake)
After 31 October, 2025	2026

For more information about when your child is eligible to begin Reception at St Mary Magdalene's School, please contact our Front Office on **8287 7900** | info@smm.catholic.edu.au

Transition to School Program

In preparation of your child's commencement of Reception at St Mary Magdalene's School, we invite you and your child to join us for three transition visits.

All Reception students are encouraged to attend all three transition visits, so that they may:

During transition visits, teachers and leadership have an opportunity to get to know your child's interests, talents as well as sooner identify learning areas which may require early intervention.

Benefits of our Transition Program for new Receptions:
» Develop a positive initial connection with teachers, leaders, and peers at the school. This can help in beginning to form a sense of belonging to our school community.
» Familiarise themselves with the school grounds and their new classrooms.
» Develop an understanding of Mercy values and school norms.
» Become accustomed to school routines such as "Learning Time", "Eating Time" etc.
» Feel safe and happy at school.

The transition program also provides an opportunity for teachers to get to know children, their interests, gifts, talents and any learning areas which may require early intervention when they begin school.

Learning

Successful teaching and learning requires the need to provide a set of fundamental skills that are transferable and adaptable to whatever the future holds.

In order to learn, children need to be provided with a solid foundation of skill acquisition and to develop a range of thinking and research abilities.

As educators, we aim to provide learning environments that give students opportunity to make their own decisions, initiate ideas, persist, find out, try again, take risks, explore and research in a range of ways that relate to children's own interests.

We use the Australian Curriculum, Crossways and the Made in the Image of God frameworks to develop our teaching programs, covered in the following key learning areas:

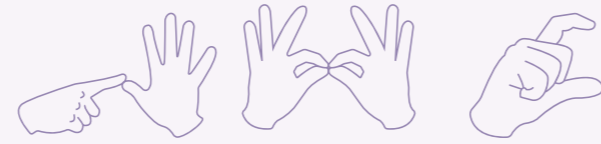
Key Learning Areas of the Australian Curriculum	
English	The Arts
Mathematics	Health and Physical Ed
Religious Education	Technologies
Science	Language (Auslan)
Humanities and Social Sciences	

Extra-Curricular Programs

We encourage students to take part in extra-curricular programs that serve their individual skills, talents, and interests.

Extra-Curricular Programs in 2025	
Catholic Schools Music Festival (Choir)	
Sports Carnivals for:	
Soccer	Netball
Swimming	Touch Football
Athletics	Cross Country
Basketball	Football

Regularly refer to our School Calendar throughout the year for updates to Carnival dates and times.



Breaking down barriers: *Introducing Auslan to our St Mary Magdalene's School Curriculum.*

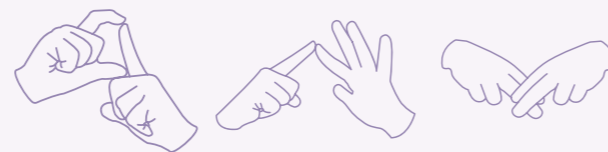
We are excited to present our students at St Mary Magdalene's School with the opportunity to learn Auslan.

Learning Auslan (*Australian Sign Language*) is a way to communicate with the Deaf and hard-of-hearing community in Australia.

There are several benefits of learning Auslan:

- » Learn to communicate with friends, family, and peers who use Auslan
- » Learn about Deaf-hood, cultural identity, and community membership.
- » Learn to see deafness as a difference, not a disability.
- » Develop neural pathways and cognitive processes unique to visual language.
- » Create an inclusive culture that supports all children and young people.

For more information about learning Auslan at St Mary Magdalene's School please contact us.



Religious Education, Faith and Parish

St Mary Magdalene's School is a Catholic school in the Mercy Tradition, therefore we include Religious Education lessons as part of our Curriculum.

During Religious Education lessons students are supported to understand Scripture with a focus on values such as love, kindness, compassion and forgiveness. Children are encouraged to think about how they can demonstrate these values in their everyday lives.

Throughout their schooling, students are invited to participate in social justice activities relating to Caritas, Project Compassion, St Vincent De Paul and other worthy causes.

Students are immersed in experiences such as:

- » Class Prayers, Liturgies, Masses
- » Whole School Masses
- » Social Outreach Initiatives
- » Social Justice Activities

Our school uses the Religious Education Curriculum (Crossways) developed by the Archdiocese of Adelaide as the basis for its offerings in Religious Education. Hand in hand with this curriculum is "Made in the Image of God", the official program for teaching Human Sexuality.

Parish and Sacramental Program

St Mary Magdalene's School is part of the Elizabeth Catholic Parish, formed by the merger of Elizabeth North and Elizabeth South Parishes. Fr Pat Woods is the Parish Priest and he commenced in September 2011.

The Sacramental Program is Parish-based and is a program supported by our school and prepares children to celebrate the Sacraments of Baptism, Reconciliation, Confirmation and Communion.

As the most significant education in faith occurs within the context of the family, the year level of your child at school is not the best way to decide the right time for your child to begin preparations to celebrate the Sacraments.

For further information feel free to contact the Parish on 8255 1191.

Uniform and Presentation

Wearing the school uniform reflects our identity not only at school but also within the wider community.

The uniform is an important part of our school tradition. Our hope is that children wear their uniform with a sense of pride and belonging.

All St Mary Magdalene's students are required and expected to wear the correct uniform. If students are not wearing the correct uniform, a uniform note will be sent home from the class teacher identifying the uniform area to be addressed.

For more information regarding our school uniform code, price list, please contact our Front Office on **8287 7900** | info@smm.catholic.edu.au.

The Uniform can be purchased from LOWES - Elizabeth City Centre | Shop 66/50 Elizabeth Way, Elizabeth SA 5112.

Family Involvement

We promote a strong connection between school and home. We strive to work in partnership with parents and families to support each child's learning.

Parents/Caregivers are encouraged to support the school in a variety of ways such:

The School Board

The School Board is one formal parent group that supports the life of our school community. The School Board welcomes new members each year.

Volunteers

There is no extra cost to become a registered volunteer, and once you have your Working With Children Check you are able to accompany children on an excursion, help in the classroom, or in any way where you may have contact with the students. Please see our office staff if you are interested in becoming a volunteer at our school.

Family Communication

Engaging in teacher-family communication can help to build a strong sense of community, and trust.



Seesaw is the app that our school uses to facilitate communication between teachers, staff and families. Seesaw also gives students a place to document their learning, be creative and learn how to use technology. Students get their own journal to add things to, like photos, videos, drawings or notes.

Financial Information

St Mary Magdalene's School aims to make our school accessible to all families who seek a Catholic education.

No Tuition Fee

We believe that financial pressure should not be a barrier to attending our school. Therefore, it was decided that families can enrol their children at St Mary Magdalene's School and pay \$0 tuition fee.

Resource Levy of \$250

There is a small Levy payable each year to cover costs of stationery and other learning resources.

Financial Hardship

Families experiencing difficulty in meeting the Resource Levy payment, they can contact the school. An assessment will be made as to eligibility and an interview and/or supporting documentation requested to enable a confidential and considerate assessment of your circumstances.

Outside School Hours Care (OSHC)

Every child has the right to be an active participant, express their own opinions, have their views considered and their cultural identity recognised. They should be able to learn in a rich, safe, engaging and nurturing environment.

St Mary Magdalene's OSHC reflects the National Quality Framework throughout our program and planning to ensure our curriculum is stimulating, challenging, educational, and fun.

Daily programs are based around the children's needs, interests, abilities, and also caters for free choice play. All children are encouraged to contribute and collaborate with educators in regards to the daily programming of activities.

We provide children with a variety of foods that are healthy and nutritious. We respect diversity among our children and families and cater to this throughout the menu.

Opening Hours

Before School	6.45am - 8.30am
After School	3.00pm - 6.00pm
Pupil Free Days	6.45am - 6.00pm

For a fee estimation please contact our OSHC Director Jenn on 0437 609 630.

Permanent and casual bookings available.





Facilities

St Mary Magdalene's boasts lovely learning and play spaces, surrounded by beautiful South Australian gum trees and gardens.

Our Learning and Play Spaces	
Nelson Grove	Central nature play-based space engaging students in vegetable gardening, natural and sensory experiences.
Yarning Place	Purpose-built hall and kitchen where community comes together to connect life, faith and learning. This is also our OSHC space.
Mercy Building	Administration centre, inclusive of staff/meeting rooms, and First Aid.
Catherine Building	Contemporary learning spaces, technology and multi-purpose area.
Mary MacKillop Building	A hub of for our community programs, playgroup, Toy Library, music/drama/media space, Sensory Break Space and more.

SMM Community Hub

Our Community Hub creates a safe space for our families and wider community to learn new skills, meet new people and feel connected.

Supporting parents to better understand the early learning needs of their children and engage with education in meaningful ways is key to building a strong, engaged community.

Our Community Hub services include:

English Language Support

Encouraging people from a wide range of ethnic and cultural backgrounds to be part of our community, enriches the lives of us all and helps produce more tolerant, more empathetic and more understanding young people.

Social and Skills Groups

We offer a range of social groups with a focus on support, friendship, and self-discovery. We invite anyone in our community to come along to any of our sessions.



For more information about any of our Community Hub services, please contact Director, Kerryn Chambers on 8287 7900.



Here for our Community: St Mary Magdalene's Community Hub

Join us for Little Maggie's Playgroup

Our Playgroup program focuses on nurturing children's natural curiosity and love of play to provide core skills to serve them throughout their schooling life. The Little Maggie's educators work on skills development and the joy of play.

Our Very Own Community Toy Library

In 2024, our Community Hub was proudly selected to have it's very own Toy Library. Free to access, our Toy Library can provide more opportunities for children and their families to engage in high-quality play-based learning at home, while improving children's social, physical, cognitive, and emotional skills, leading to improved school readiness. We encourage you to visit us, and borrow toys to take home and play together with your families.



Student Well-being

At St Mary Magdalene’s School we understand and recognise that student learning is enhanced when they feel safe, happy and have a sense of belonging to their school community.

We are committed to student well-being through a variety of whole school programs and preventative strategies.

All of these programs and strategies support us to build positive relationships between staff, students and our parent and guardian community.

Children’s University

This exceptional program aims to make all children lifelong learners and achievers. The Children’s University curate educational experiences that offer a global perspective and reward participants for their hard work. All of the local, experiential activities (or Learning Destinations) have a tangible link to university, which in turn fosters the children’s ambitions to consider participation in higher education.

Participating in Children’s University is voluntary, the learning is led by the child in order to create greater motivation and engagement. Members can learn about what they are interested in!

Every participating student is recognised and rewarded with a graduation ceremony and certificates, giving them a true sense of pride in their accomplishments – and aspiration for their future endeavours.

LEGO® Club

LEGO® Club is a play-based approach used to encourage development of students’ communication and social skills. Students work in groups, each fulfilling a role to construct a model with the guidance of a facilitator.

5-Point Scale

The 5-point scale is a whole school strategy used to support students with regulation, develop consistent language between educators and students, promote social-emotional understanding and assist with smoother transitions between classrooms each year. The 5-point scale is a concrete, systematic and non-judgmental way of teaching social and emotional skills to help children notice and functionally respond to their own and other’s social behaviour.

With their teacher’s guidance, students create their own individual scales and review them at allocated times. The review process of the 5-point scale is an important aspect, ensuring that it remains relevant to the student and continuing to work for them. Staff training is provided to ensure consistency across the school as well as family information sessions, strengthening the connection between school and home.

Buddies Program

At the beginning of each year, each class is buddied up with another class in the school. Buddies support children to develop connections across the school. Buddy classes meet approximately 3 times per term to engage in fun and exciting activities.

MindUP Curriculum

The MindUP Curriculum is implemented each year across all year levels R-6. It is a comprehensive, classroom tested, evidence-based curriculum that fosters social and emotional awareness, enhances psychological wellbeing and promotes academic success. Through engaging in learning experiences that improve self-control and self-regulation skills, student’s strengthen their resilience and decision making, bolster enthusiasm for learning, reduce peer to peer conflict, increase academic success and develop positive social skills such as empathy, compassion, patience and generosity.

Positive Reinforcement

Positive reinforcement strategies are used to support and encourage children to demonstrate positive behavioural choices such as those highlighted in our School Expectations.

In Reception-Year 2 we focus on a strategy known as ‘Bucket Fillers’. It is a concept that encourages positive behaviour as children see how very easy and rewarding it is to express kindness, love and appreciation, on a daily basis. Children discover that when they fill someone’s bucket, they are also filling their own. Bucket filling is the moment by moment choice to be kind and caring.

Restorative Practice

At St Mary Magdalene’s School we implement a whole school teaching and learning approach named Restorative Practice that is based on values including empathy, respect, honesty and accountability. At the heart of Restorative Practice is a focus on repairing and strengthening relationships and restoring harmony in classrooms and across the whole school community.

School Counsellor

We value the importance of supporting children’s social and emotional needs. Our School Counsellor supports children in a variety of ways, working one to one, in small groups, whole classes and year level cohorts. They help children to work through conflict, develop friendship skills, resilience, self esteem, body image and many other skills. Our Counsellor also plays a vital role in providing support to our families on a needs basis.

Peaceful Kids

Peaceful Kids is a Mindfulness and Positive Psychology-based program to lessen anxiety and worries and increase resilience in children.

The developmentally appropriate program aims to:

Lessen symptoms of anxiety and worry
Empower children to self-calm
Build emotional resilience and intelligence
Teach life-long skills to manage stress and prevent build up
Remind children they are not alone with their suffering of anxiety



08 8287 7900



info@smm.catholic.edu.au



smm.catholic.edu.au



82 Fairfield Road Elizabeth Grove SA 5112

Principal | Belinda Bennett

Head of School | Gareth Molyneux

Assistant Principal, Religious Identity and Mission (APRIM) | Aimee Tulio

Inclusive Education, Wellbeing Coordinator and Leader of Learning - Curriculum | Michelle Menadue

Leader of Learning - Wellbeing | Matt McGinty

School Hours | Monday - Friday 8.45am - 3.00pm

The school yard is supervised every morning from 8:30am. Children arriving before 8:30am or remaining past 3:15pm are asked to join OSHC. This will incur a fee as per the fee schedule. Visit our website for more information.

Compassion
Justice Respect
Hospitality Service
Courage